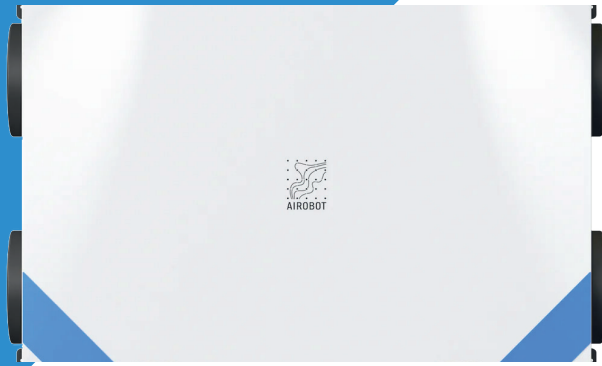


AIROBOT L5

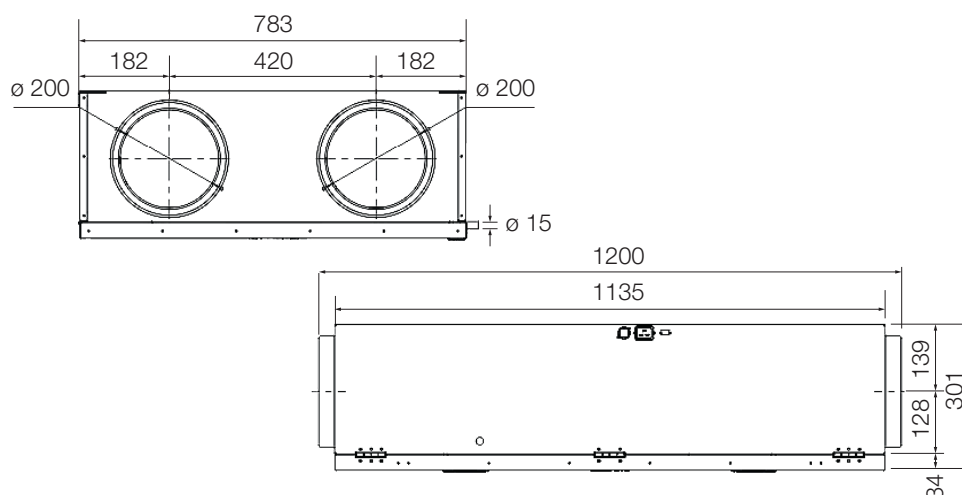


As standard equipment, includes:

- integrated CO₂, VOC, air temperature and humidity sensors
- autonomous control – smart motor control ensures pleasant indoor air and energy efficiency
- room occupancy sensing and energy-saving mode
- humidity detection mode
- overpressure and boost modes.

Specifications

Installation	ceiling-mounted, horizontally
Airflow up to	L5: 500 m ³ /h or 139 l/s or 250 m ² ventilated area L5 ERV: 500 m ³ /h or 139 l/s or 250 m ² ventilated area
Heat exchanger	L5: plate heat exchanger with heat recovery L5 ERV: plate heat exchanger with heat and humidity recovery
Heat recovery efficiency	L5: 85% (70% airflow). L5 ERV: 88% (70% airflow, humidity recovery efficiency 66%)
Panel filters	extract ePM10 55% (M5) / outside air ePM1 55% (F7)
Power supply	1~230 VAC 50 Hz
Maximum power	2.2 kW (16 A)
Motors	2 × 170 W Radical EC
Preheater (frost protection)	integrated, nominal power 1.5 kW PTC, 0–100% control
Special power SPI (L5 / L5 ERV)	0.28/0.27 W/(m ³ /h) ^{350 m³/h / 50 Pa}
Special power SFP (L5 / L5 ERV)	1.08/0.97 W/(m ³ /s) ^{350 m³/h / 50 Pa}
Condensate connection (mm)	15 mm, 3 m hose included (only HRV)
Colours	white, black
Packaging	1200 × 310 × 800, weight 70 kg



Ducts

Type R

1. Supply air
2. Extract air
3. Exhaust air
4. Outside air

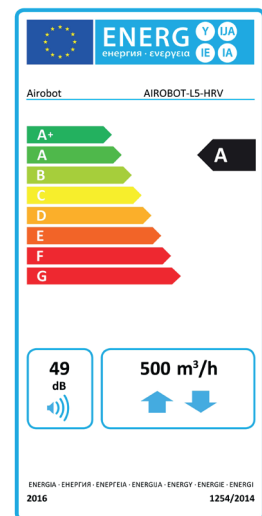
Type L

1. Exhaust air
2. Outside air
3. Supply air
4. Extract air



Energy labels

Airobot L5



Airobot L5 ERV

